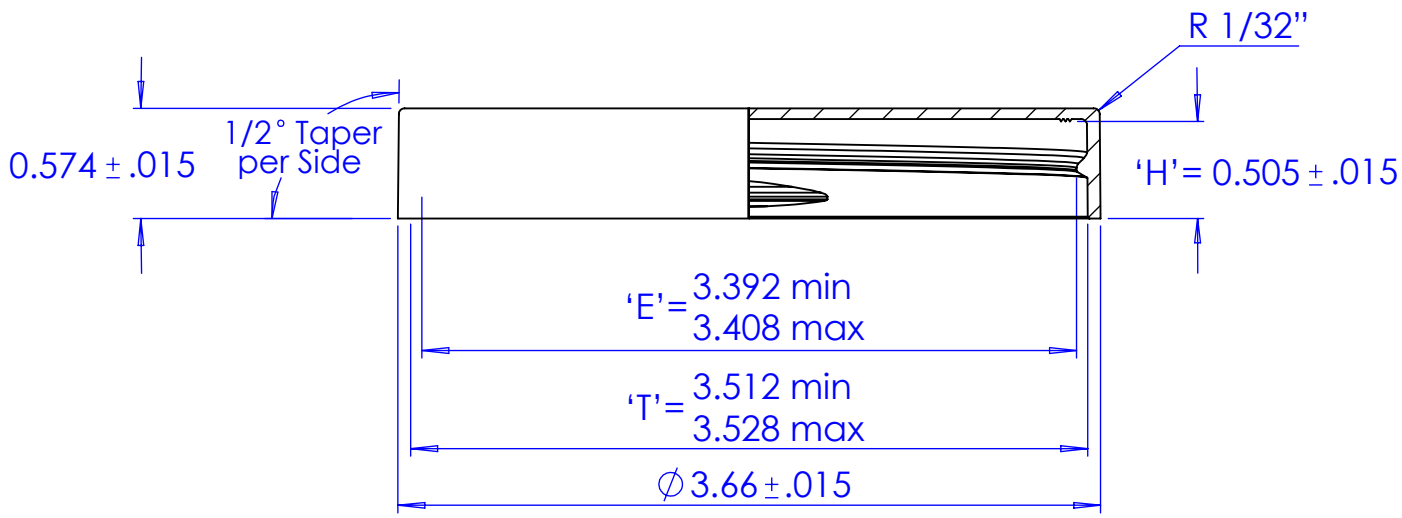
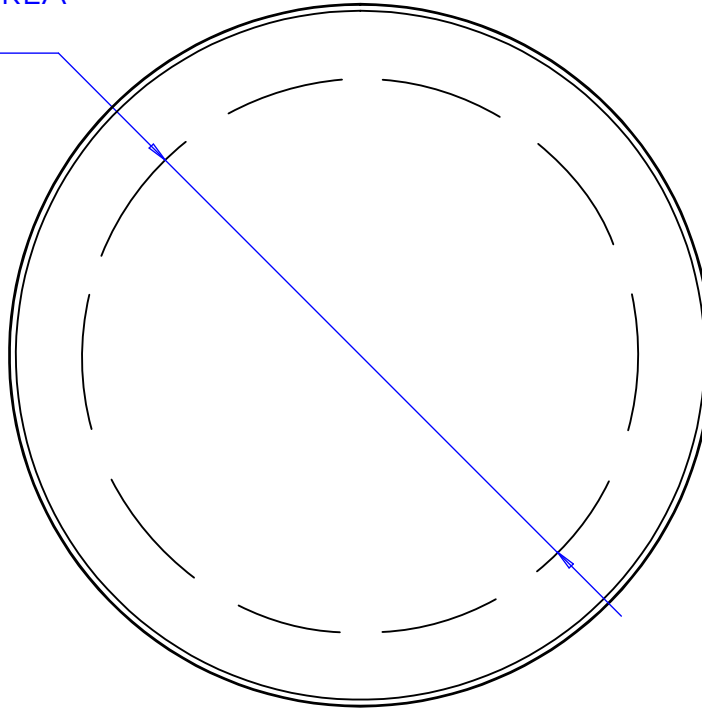


WARNING: PROPRIETARY AND CONFIDENTIAL

THE INFORMATION CONTAINED IN THIS DRAWING IS THE SOLE PROPERTY OF TARAL PLASTICS. ANY UNAUTHORIZED USE, TRANSMISSION, OR REPRODUCTION IN PART OR AS A WHOLE WITHOUT THE WRITTEN PERMISSION OF TARAL PLASTICS IS STRICTLY PROHIBITED.

DECORATION AREA

Ø 3.30



REVISIONS				UNLESS OTHERWISE NOTED DIMENSIONS ARE IN INCHES TOLERANCE ARE:		MATERIAL: POLYPROPYLENE		PART DESCRIPTION:	
REV.	DATE	DESCRIPTION	BY	DIM.	TOL.	APPROX WEIGHT:	OVERFLOW CAPACITY:	THREAD PITCH:	No. OF THREAD TURNS:
				.00	.015	15.2 GRAMS +/- 3%	N/A	.200 PITCH (5 TPI)	1-1/10
				.000	.010			DRAWN BY: D. TAUNK	DATE: 10/1/2014
COMMENTS: MADE IN U.S.A.									
								PART CODE: 89SS-PP-UC	
								REV. -	SIZE A
SCALE: 1:1		DO NOT SCALE DRAWING				SHEET 1 OF 1			

**89mm-400 CLOSURE
SMOOTH SIDE & TOP
(INSIDE-GATED)**